

Dubai Municipality: Avoid Network Upgrade with One Year ROI



Business Profile:

Dubai Municipality provides transportation, garbage collection, parking and other services with over 10,000 employees and 95 WAN-connected locations.

Industry:

Government

Challenges:

Dubai Municipality has grown their number of WAN-connected locations from seven in 1999 to 95 today. The number of connected computers increased from 400 to 2,700 during the same time period. This dramatic growth put heavy strains on their WAN connections between their offices.

Solution:

Dubai Municipality deployed 16 Juniper Networks WX™ 50 application acceleration platforms with no changes to their existing network, no training, and almost no network downtime.

Benefits:

Dubai Municipality immediately realized peak reduction rates of 80 percent corresponding to a capacity increase of more than five times. Average reduction levels were 65 percent corresponding to a 3x increase in capacity. They estimate a one-year hard dollar return on investment compared to purchasing additional capacity.

“Traffic shaping provides us some small benefits, but we really needed more capacity. Juniper Networks WX 50s immediately gave us five times more network capacity during peak periods. Our users immediately saw much better application performance. I plan to purchase an additional eight units to deploy to new locations as the need arises.”

Indranil Guha
Head of Network Services Unit
Dubai Municipality

Company:

Dubai Municipality is one of the largest organizations in Dubai as measured by number of employees and the size of its projects. They employ more than 10,000 staff working in over 20 departments. They allocate and classify land plots, operate infrastructure including roads and drainage/sewage, maintain public buildings, provide public transport, and develop library services. Dubai Municipality is the major driving force behind the development process of Dubai City as a whole.

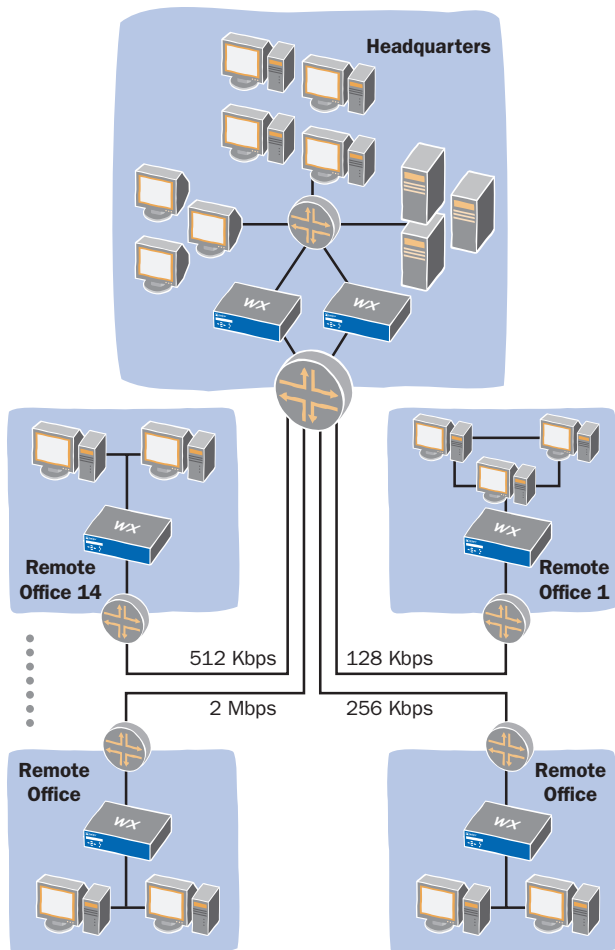
Customer Challenges:

In 1998, Dubai Municipality had only five WAN-connected sites with very few computers and systems. In 2003, this number had grown to 95 WAN-connected sites with more than 50 systems and 2,700 computers. The challenge has been to provide reliable, high-speed connectivity for their employees who are increasingly reliant on internal systems to deliver public services. Application response times suffered as the number of users at each site grew faster than the capacity of their wide area network (WAN).

Juniper Networks Solutions:

Dubai Municipality deployed 16 Juniper Networks WX 50 application acceleration platforms in total – two at headquarters (for redundancy) and 14 in field offices that were in the greatest need of additional capacity. They

instantly saw an 80 percent reduction in WAN traffic during peak hours corresponding to a capacity increase of five times. On average, Juniper Networks reduced traffic 65 percent corresponding to a capacity increase of almost three times. Immediately application response times dropped and congestion was alleviated at these locations. Installation was easy, did not require training, and ongoing management has been minimal.



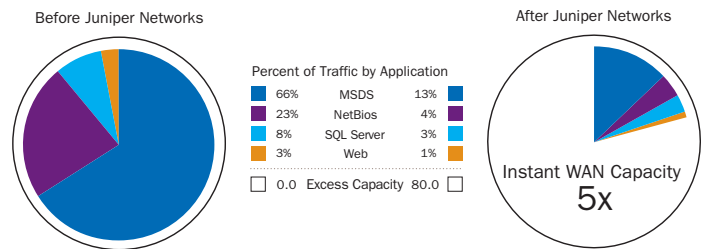
Dubai Municipality deployed 16 Juniper Networks WX 50 platforms, instantly increasing their WAN capacity more than five times during peak periods by removing 80 percent of their WAN traffic. Average reduction levels were 65 percent corresponding to a three-times increase in capacity.

Alternatives Considered:

Abdul Hakim Malik, IT director, Dubai Municipality at Dubai Municipality had already evaluated and deployed traffic shaping solution. This was effective to prioritize applications and limit certain traffic types. However, he needed more WAN capacity to serve his rapidly growing user base. A network upgrade would cost approximately \$15,000 per line.

Juniper Networks Benefits:

Dubai Municipality dramatically increased the capacity of their existing network, allowing them to support more users and applications. Users now get much faster application responses allowing them to be more productive. They estimate a return on their investment in about six months compared to purchasing additional capacity. They plan to deploy more units to new locations shortly.



Dubai Municipality increased their WAN capacity five times during peak periods by reducing their backbone data traffic by 80 percent.



CORPORATE HEADQUARTERS
AND SALES HEADQUARTERS
FOR NORTH AND SOUTH AMERICA

Juniper Networks, Inc.
1194 North Mathilda Avenue
Sunnyvale, CA 94089 USA
Phone: 888-JUNIPER (888-586-4737)
or 408-745-2000
Fax: 408-745-2100

www.juniper.net

EAST COAST OFFICE

Juniper Networks, Inc.
10 Technology Park Drive
Westford, MA 01886-3146 USA
Phone: 978-589-5800
Fax: 978-589-0800

ASIA PACIFIC REGIONAL
SALES HEADQUARTERS

Juniper Networks (Hong Kong) Ltd.
Suite 2507-11, Asia Pacific Finance Tower
Citibank Plaza, 3 Garden Road
Central, Hong Kong
Phone: 852-2332-3636
Fax: 852-2574-7803

EUROPE, MIDDLE EAST, AFRICA
REGIONAL SALES HEADQUARTERS

Juniper Networks (UK) Limited
Juniper House
Guildford Road
Leatherhead
Surrey, KT22 9JH, U. K.
Phone: 44(0)-1372-385500
Fax: 44(0)-1372-385501

Copyright 2005, Juniper Networks, Inc. All rights reserved. Juniper Networks and the Juniper Networks logo are registered trademarks of Juniper Networks, Inc. in the United States and other countries. All other trademarks, service marks, registered trademarks, or registered service marks in this document are the property of Juniper Networks or their respective owners. All specifications are subject to change without notice. Juniper Networks assumes no responsibility for any inaccuracies in this document or for any obligation to update information in this document. Juniper Networks reserves the right to change, modify, transfer, or otherwise revise this publication without notice.