

Solution Brief

**RADIUS and WLAN
Security Solutions
for Novell**

If you are running a Novell network on Windows, Solaris or SUSE LINUX and wish to set up secure Wireless, Wired or VPN access, look no further than Juniper Networks' suite of RADIUS- and 802.1X-based solutions.

These solutions let you centrally manage and secure your network access and offer market-leading compatibility with Novell's eDirectory authentication system and the Novell Client for Windows.

Steel-Belted Radius, our industry-leading RADIUS server, easily handles your authentication and security requirements, whatever network access method you have in place, and however you've chosen to set up eDirectory or other authentication system.

In addition, SBR offers unsurpassed multi-vendor support of VPN servers, switches, and WLAN equipment; support for a wide variety of back-end systems, including SQL databases, token systems such as RSA Security's SecurID® system, and Windows; and support for the widest variety of WLAN security protocols.

And, if you are setting up secure WLAN access, Juniper Networks' 802.1X access client Odyssey® Access Client is an indispensable component of your installation. Together with SBR, OAC provides a complete WLAN security solution that fully protects against the known hazards of wireless computing.

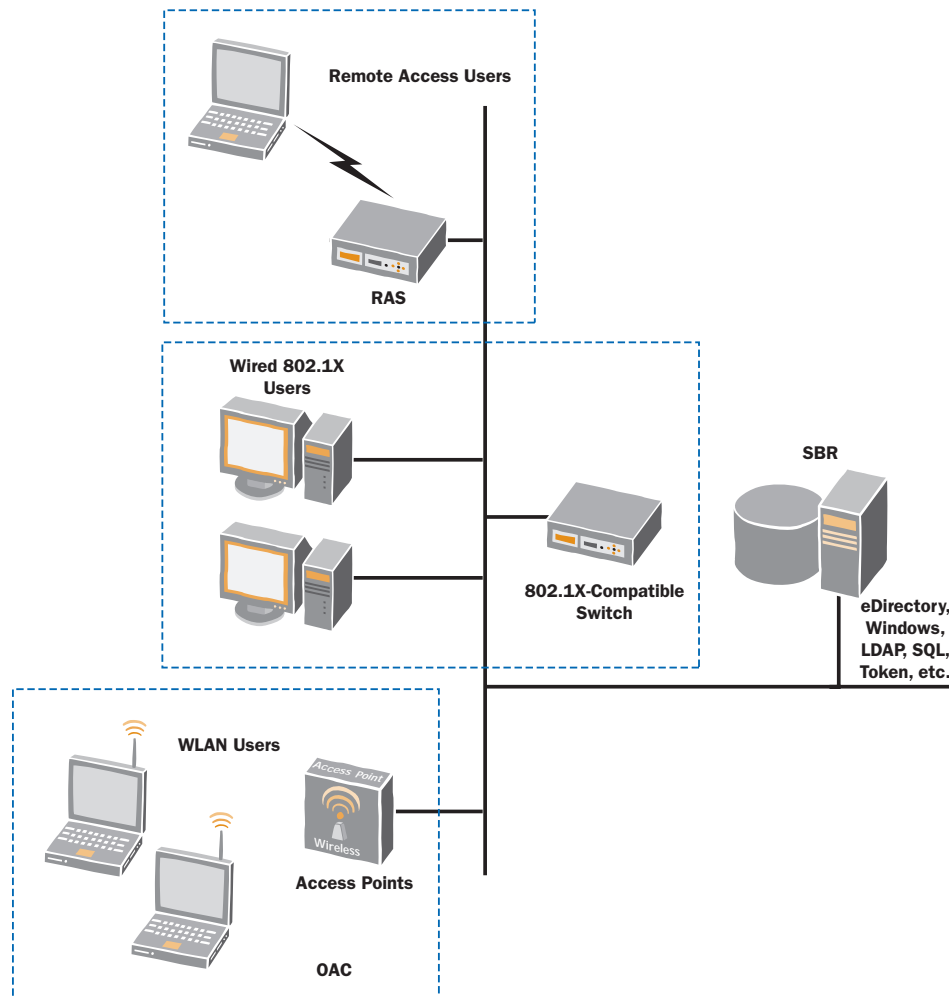
OAC is a multi-platform, multi-protocol 802.1X access client that lets a user establish a secure network connection over a wireless or wired link. It is the only 802.1X client that is fully compatible with the Novell Client for Windows. And, OAC offers advanced pre-configuration, deployment, and security features that make it the best choice for your WLAN or wired 802.1X installation. Whatever type of network access security you need to set up, Juniper Networks' RADIUS- and 802.1X-based products will keep your networks safe from unauthorized access.

With a RADIUS and 802.1X solution, you can:

- Authenticate WLAN, remote access/VPN, or wired 802.1X users against eDirectory, no matter how you've set it up, regardless of its size or structure.
- Implement a WLAN security solution that's fully compatible with your Novell systems
- Enable single network logon for WLAN users running the Novell Client for Windows; flexible logon options support any requirement. All other 802.1X clients require users to log in both to the Novell Client and the 802.1X client.
- Centralize the management and security of all the WLAN, wired 802.1X, and remote/VPN users in your organization, to streamline maintenance and enhance the security of your network.
- Quickly deploy secure WLAN and wired 802.1X access across Windows XP, 2000, 98, Me, Pocket PC 2002, and Windows Mobile 2003 for Pocket PC – using OAC's market-leading preconfiguration and deployment tools
- Secure and manage user access, regardless of WLAN, remote/VPN, or wired 802.1X access equipment you choose to run.
- Use the same 802.1X client to support both wired and wireless users – no need for two separate solutions
- Implement the solution that's been fine-tuned to work in Novell environments. Features such as support for grace logins and SSL encryption of authentication requests between SBR and eDirectory allow you to get the most out of your Novell investment.

Juniper Networks' complete suite of 802.1X- and RADIUS-based solutions include:

- **OAC** Juniper Networks' 802.1X access client lets users securely connect to the WLAN, or to wired 802.1X networks. OAC supports EAP-TTLS, PEAP, EAP-TLS, and Cisco's EAP-FAST and LEAP, and runs on Windows XP, 2000, 98, Me, Pocket PC 2002, and Windows Mobile 2003 for Pocket PC. This multi-platform, multi-protocol support, plus advanced pre-configuration and usability features, make OAC ideally suited to enterprise-wide deployment
- **Odyssey Access Server or SBR** Market-leading RADIUS servers which communicate with network access equipment such as WLAN access points or VPN servers to authenticate users against eDirectory (or other authentication method) and set up their secure connections. OAS and SBR support EAP-TTLS, PEAP, EAP-TLS, and Cisco's EAP-FAST and LEAP.
- **SBR** can authenticate WLAN, wired 802.1X, and remote/VPN users against eDirectory, Windows, Solaris, SQL, LDAP, or token systems. OAS can authenticate WLAN users against Windows, or can forward authentication requests to SBR or other compatible RADIUS server for authentication against non-Windows authentication systems.



SBR easily authenticates WLAN, wired 802.1X and remote users against eDirectory or other systems.



CORPORATE HEADQUARTERS
AND SALES HEADQUARTERS
FOR NORTH AND SOUTH AMERICA

Juniper Networks, Inc.
1194 North Mathilda Avenue
Sunnyvale, CA 94089 USA
Phone: 888-JUNIPER (888-586-4737)
or 408-745-2000
Fax: 408-745-2100

www.juniper.net

EAST COAST OFFICE

Juniper Networks, Inc.
10 Technology Park Drive
Westford, MA 01886-3146 USA
Phone: 978-589-5800
Fax: 978-589-0800

ASIA PACIFIC REGIONAL
SALES HEADQUARTERS

Juniper Networks (Hong Kong) Ltd.
Suite 2507-11, Asia Pacific Finance Tower
Citibank Plaza, 3 Garden Road
Central, Hong Kong
Phone: 852-2332-3636
Fax: 852-2574-7803

EUROPE, MIDDLE EAST, AFRICA
REGIONAL SALES HEADQUARTERS

Juniper Networks (UK) Limited
Juniper House
Guildford Road
Leatherhead
Surrey, KT22 9JH, U. K.
Phone: 44(0)-1372-385500
Fax: 44(0)-1372-385501